



LIVING THE

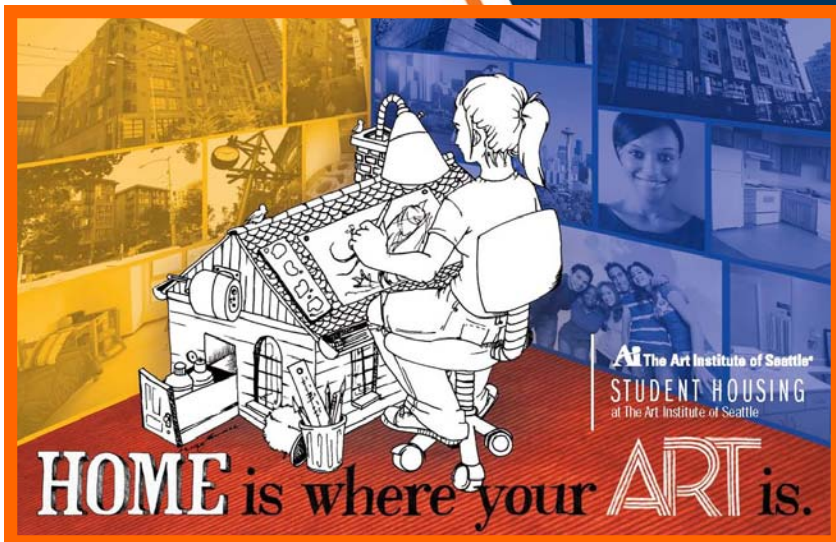
COLLEGE EXPERIENCE

SCHOOL-SPONSORED HOUSING

FALL 2010 - SPRING 2011

CONTENTS

Welcome	3
Mission Statement	4
5 Reasons	5
Frequently Asked Questions	6
Options	8
Buildings	9
Tours	11
Student Conduct	12
License Agreement	13
Application Process	14
Calendar	15
Application	16





WELCOME

Dear Future Housing Student,

Welcome to The Art Institute of Seattle! We hope you choose to become part of our Student Housing community. School-Sponsored Housing is often a perfect compromise for parents and students, between living at home and living on your own. Many of the lasting connections and memories you'll make at college will happen outside of the classroom. Student Housing gives you the opportunity to connect with your classmates on a daily basis. Together with our close proximity to The Art Institute of Seattle, you will have more possibilities to get the most from your education while taking in the sites and sounds of Seattle.

Student apartments feature furnished living areas with kitchens, bathrooms and closets, and are a quick walk to the college. Additionally, Professional and Student Staff live in the building to help provide assistance as you transition into college life. To ensure there are enough apartments available, we offer *The Lenora* apartments as our main facility, as well as additional apartments in a second facility, *Archstone Elliott Bay*, both within walking distance from the college.

School-Sponsored Housing at The Art Institute of Seattle is a great complement to your college education. We hope you choose to live the college experience at The Art Institute of Seattle in School-Sponsored Housing. If you have any questions, contact Student Affairs at 1-800-275-2471, 206-239-2290 or ais_house@aii.edu. We look forward to hearing from you.

MISSION

School-Sponsored Housing is a positive living-learning community. We provide a quality and competitive option for students in Seattle. We promote academic and professional success that fosters individual growth while encouraging

Responsibility,
Ownership,
Accountability
& Respect
(R.O.A.R.).





5 REASONS

...why *The Lenora* is where you want to be!

1. Independence

- * No *dorm-style* rooms
- * Your *apartment* comes complete with a kitchen & bathroom

2. Flexibility

- * Choose between Studios, 1 Bedroom or 2 Bedroom Apartments
- * 2 or 4 quarter License Agreement options

3. Convenience

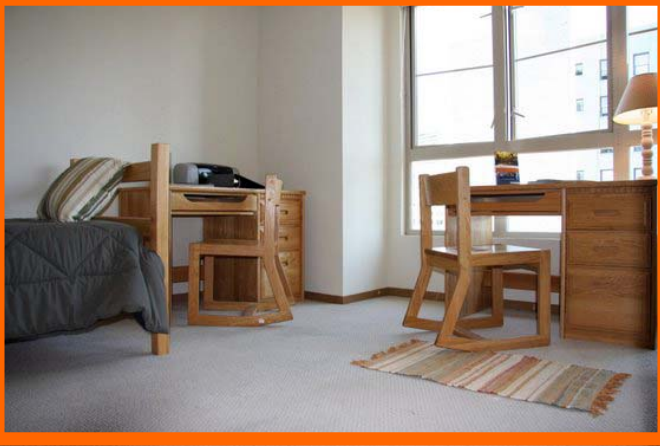
- * Located 5 blocks from the college, an approximate 10 minute walk
- * No apartment hunting, roommate searching or previous rental history required
- * 24 hour cable TV lounge and work area
- * WIFI throughout the building; inside apartments and in common areas
- * Movie rentals available
- * Furnished with standard twin beds, dressers, desks & chairs
- * Kitchens include appliances; complete with dishwashers and garbage disposals
- * 24 hour laundry rooms and many apartments with washers and dryers inside
- * Open during college breaks so you can stay in your apartment

4. Security

- * Professional and student staff live in and work on site to assist students
- * Secured entry buildings with Security Officers
- * Safety sessions offered

5. Affordability

- * Financial Aid may cover costs
- * Rates include utilities, laundry, furnishings, internet, activities and more
- * Deposit payments accepted, No first or last months rent required before move-in



FAQ

Why should I live in School-Sponsored Housing?

We provide a comfortable and convenient student community in an urban setting. School-Sponsored Housing is a great way to transition into college life, meet other students and explore Seattle. No rental, employment or credit history is required, and you avoid paying high start up costs and apartment hunting. Unlike typical college housing, you aren't required to vacate during quarterly breaks.

Living in Student Housing and walking to school saves you the hassle of commuting, time spent in traffic and the costs of driving a vehicle. Studies about the impact of college on students have shown that compared to those who commute, students who live on campus are more likely to return to college the following year, persist at college to graduation, and have a higher degree of satisfaction with their college experience.

To help create a living-learning environment, professional and live-in staff manage the facility and assist residents. Resident Assistants create activities, enforce policies and mentor students. *The Lenora* features secured entry and elevators and Security Officers who are present daily. *The Lenora* includes WIFI throughout, a cable TV lounge and work area, 24 hour laundry and trash rooms, and locking mailboxes. *Archstone Elliott Bay* also features secured entry and mailboxes, as well as free internet on computers in their business center and a laundry room in each apartment.

What are the apartments like?

There are a variety of floor plans available at *The Lenora* apartments. All have carpeted living areas with windows (most feature views of downtown, and some have water views of the Puget Sound!), a kitchen, 1-2 bathrooms and closet space. *Archstone Elliott Bay* apartments have interiors similar to *The Lenora*, but are all 2 bedroom apartments for 4 students. Both buildings include utilities; water, sewage, garbage, electricity; basic furniture and activities.



FAQ

Where is it located?

The Lenora Apartments are located in downtown Seattle, approximately 5 blocks from The Art Institute of Seattle. You will find the world famous Pike Place Market and The Space Needle are a quick walk from your apartment. We are also on the bus line and walking distance to theatres, shopping, restaurants, parks, The Seattle Art Museum, Game Works, Experience Music Project, The Science Fiction Museum and more.

What is included?

Each student is assigned a space in School-Sponsored Housing. Reasonable use of utilities is included. Internet is available throughout The Lenora Apartments. Students also receive a standard twin bed, dresser, desk, chair and other furniture depending on space. Laundry rooms are always open and available at no charge. Many apartments include a washer and dryer. Activities are open to all residents and often include food. The Art Institute of Seattle is not responsible for costs associated with food, phone, cable, transit or parking.

What is the cost?

The rates start at \$928 per student per month. Be sure to calculate the amenities offered at no additional cost when comparing housing options. One of the many benefits of living in School-Sponsored Housing is that Financial Aid is available for those who qualify and may be applied toward costs.

Should I bring a car?

Cars are discouraged due to the high costs of ownership, insurance, parking, gas, maintenance, and the burden of driving in Seattle traffic. We encourage students to use public transportation or walk, bike or skate when possible. *The Lenora* is located in a Ride Free Zone, where busses are available at no cost. Other options include taxi, train, light rail and ferry. If you choose to bring a vehicle, there is a parking garage under the building available for an additional expense of approximately \$200 per month.



OPTIONS

Financial Aid Officers at the college can help determine your most affordable housing options.

Shared Housing

Students live in shared housing with 1, 2, or 3 roommates. You and your roommate(s) decide the furniture and sleeping arrangements. Studios house 2 students and range from 465-520 square feet in size. For those seeking more privacy, consider sharing a 1 bedroom apartment for 2 students, which average 670 square feet. Large Studios house 3 students and are approximately 700 square feet. 2 bedroom 2 bathroom apartments house 4 students and are approximately 900 square feet in size. Please alert us if you are requesting Private Housing based on a disability or medical condition.

While the vast majority of residents attend The Art Institute of Seattle, students attending other area colleges may apply for School-Sponsored Housing. A background check is required for students from other colleges, at an additional cost of \$25.00.

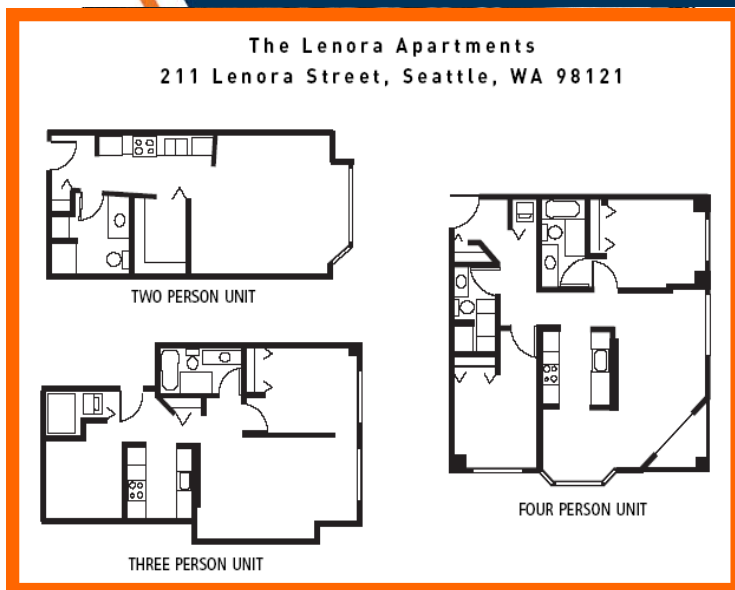
Assignments

Assignments are based on the submission date of your Housing Application and deposit. Room and roommates are assigned based on preferences indicated on your Application, availability and subject to change. Apartments are assigned to students of the same gender identity, however floors and buildings are co-ed. If 2 students are requesting Married or Domestic Partner Housing, gender is irrelevant, but a Marriage/Partnership Certificate is required.

What to Bring

We encourage students to bring necessities including clothing, linens, school supplies, computer, phone, dishes, cleaning products, etcetera; while other items can be brought or purchased after evaluating the space in the apartment and meeting roommates. A "What to Bring List" is available on our website.

THE LENORA



The Lenora apartments is our all-student residence. The location borders the Belltown and Downtown neighborhoods, and is an approximate 10 minute walk to the college. This urban building features 105 units that house 1-4 students (see floor plans above). The Lenora features 5 stories of housing over street-side retail stores and underground parking. Retail space includes Starbucks Coffee, a Hair Salon and Restaurant. Residents enjoy the buildings sense of privacy, modern look and amenities.

ARCHSTONE ELLIOTT BAY



Students who live in *Archstone Elliott Bay* share the building with other Seattleites. Individual apartments consist of students only. The building is located in the lower Queen Anne neighborhood, an approximate 15 minute walk to the college. All apartments house 4 students (see sample floor plan above) and features 8 stories of housing over a street-side deli and underground parking. Amenities include business center with free internet, pay WIFI hot spot lounge and conference room. Residents enjoy the professional atmosphere.



TOURS

Tours are typically conducted by Housing staff or Admissions representative. A standard 2 person studio apartment is available for viewing. Housing tours are provided during Open House events and by request. **To schedule a tour, contact your Admissions representative at 1-800-275-2471 or call Housing directly at 206-239-0789.**

Address:

211 Lenora Street
Seattle, WA. 98133

Phone:

Lenora Office: 206-239-0789
Housing Department: 206-239-2291

Directions from The Art Institute of Seattle:

Driving:

South on Elliott Avenue
Left on Blanchard Street
Right on 3rd Avenue
Right on Lenora Street

Walking:

South (Right) on Elliott Avenue
Use crosswalk to continue under viaduct
Left on Lenora Street

Parking:

Pay metered parking is available on the surrounding streets for up to 2 hours. Most meters take credit cards, some are change only. A day parking lot located on Lenora Street, across from the building that offers hourly or all day parking options. All day parking is also offered below The Lenora Apartments.



CONDUCT

In order to reinforce the mission to provide an educational and business environment that is safe, professional and respectful, it is expected that students will conduct themselves during their education in the same manner expected of them in a future employment situation. All students are encouraged to read and become familiar with the policy that governs student behavior at The Art Institute of Seattle, the Student Code of Conduct. To view the Code of Conduct in its entirety, visit our website at www.ais.edu.

The following examples are behaviors deemed inappropriate under the Code of Conduct:

- Any criminal act
- Abusive language or gestures
- Defiance or failure to comply with school personnel in the performance of their duties
- Violation by a student's guest while visiting The Art Institute of Seattle
- Vandalism, graffiti or any damage to school property
- Breach of peace
- Smoking anywhere except designated areas outside of buildings
- Any violation of the student housing contract or rules/regulations

Additional policies exist in Student Housing to ensure the safety and sense of community among our residents. Policies are detailed in the Student Housing License Agreement and the Guide to Resident Living. Examples include:

- No pets allowed except fish in a 30 gallon or less tank.
- Residents are responsible for guest behavior and should escort guests at all times.
- Underage alcohol use/possession, decorative bottles are not allowed.
- Use/possession of drugs or drug paraphernalia is prohibited.
- No open flame is permitted in the building including burning candles or incense.
- Throwing objects out of windows or off balconies may result in immediate eviction.



LICENSE AGREEMENT

A License Agreement is a contract required to live in School-Sponsored Housing at The Art Institute of Seattle. You may choose a term of either 2 or 4 consecutive quarters. Students starting mid-quarter sign for 1 1/2 or 3 1/2 consecutive quarters. In an effort to ensure housing students prioritize their education, residents must be enrolled in at least 9 credits.

The License Agreement is available on our website and is not due until move-in day. License Agreements will be provided to you during our check-in process. Students under 18 years old must have a parent/legal guardian sign the document.

The Agreement does not commit you to a particular apartment or roommate. You may change rooms or buildings. At the end of your Agreement, you may choose to sign a new Agreement, or move out. Students who do not fulfill the terms of the Agreement are subject to penalty fees.

The occupancy charge varies based on room style, length of Agreement and may be billed on a quarterly (qtr) basis. Per person housing rates through Spring 2011 are:

<u>Room Style</u>	<u>4 Quarter Agreement</u>	<u>2 Quarter Agreement</u>
Studio , Large Studio, 2 Bedroom	\$928/month (\$2,784/qtr)	\$997/month (\$2,991/qtr)
1 Bedroom	\$979/month (\$2,937/qtr)	\$1,049/month (\$3,148/qtr)



APPLY

Confirm your space in School-Sponsored Housing today! Complete the Application Process before the Housing Deadline to receive advance priority assignment. See the following page for a list of deadlines and other important dates.

Requirements Include:

- * **Housing Application**
- * **Completed Art Institute of Seattle Financial Plan**
- * **\$250.00 Housing Deposit**

Once you have completed the requirements, your housing will be confirmed. Housing assignments are made based on the date you pay deposit. The earlier you confirm, the more likely you are to have your preferences accommodated. Assignments are sent approximately 2 weeks before move-in.

Complete Application and Pay Deposit by submitting the Application in this packet or the Online Application at www.ais.edu. Click "Student Life" and "Student Housing" to get to the Housing website.

You can also **Pay Deposit** by phone with Accounting at 1-800-275-2471. \$50.00 is refundable, pursuant of the License Agreement. 100% is refundable if housing is cancelled on or before the Housing Deadline. Canceling Housing after the deadline will result in loss of deposit.

Completed Financial Plan.

Contact Student Financial Services at 1-800-275-2471 if you have questions about completing the financial plan.



CALENDAR

Fall I

Housing Deadline	Monday, August 30th 2010
Assignments Sent	Wednesday, September 15th
Housing Move-In	Wednesday, September 29th— Thursday, September 30th 2010 (1 day before student orientation)
Quarter Start	Monday, October 4th 2010

Fall II: Mid-Session

Housing Deadline	Monday, October 11th 2010
Housing Move-In	Tuesday, November 9th 2010
Quarter Start	Thursday, November 11th 2010

Winter I

Housing Deadline	Monday, December 7th 2010
Housing Move-In	Thursday, January 6th 2011
Quarter Start	Monday, January 10th 2011

Winter II: Mid-Session

Housing Deadline	Monday, January 17th 2011
Housing Move-In	Tuesday, February 15th 2011
Quarter Start	Thursday, February 17th 2011

Spring I

Housing Deadline	Tuesday, March 1st 2011
Housing Move-In	Thursday, March 31st 2011
Quarter Start	Monday, April 4th 2011

Spring II: Mid-Session

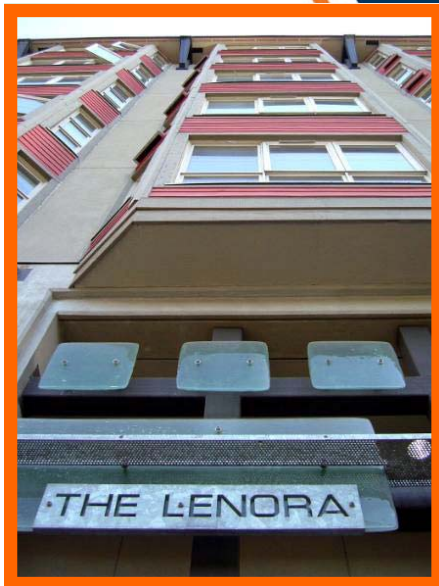
Housing Deadline	Tuesday, April 12th 2011
Housing Move-In	Tuesday, May 10th 2011
Quarter Start	Thursday, May 12th 2011

APPLICATION

Please complete the following 3 pages of the Housing Application. The information you provide helps us to determine a roommate and room assignment. Once you have completed the Housing Application, please send it to the Housing Department. If you are sending by mail, you can include a \$250.00 check or money order. Simply indicate "Housing Deposit" and the Students Name in the subject line of the check.

Or APPLY ONLINE at: www.ais.edu

Click "Student Life" and "Student Housing" to get to the website.



Housing Application PAGE 1 of 3

Please complete the information provided below and submit with the Housing Deposit of \$250. Cancelling after the 30 day Housing Deadline will result in loss of deposit (see calendar in School-Sponsored Housing Packet for deadlines). The Art Institute of Seattle does not guarantee space in School-Sponsored Housing. Space is limited and is available on a first-come first-serve basis. Space will not be reserved until the student is accepted to the school and the appropriate deposit amount has been received. Students must be enrolled in school in order to reside in School-Sponsored Housing.

Basic Personal Information:

First Name:

Last Name:

Telephone with area code:

Email Address:

City:

State:

Country (if outside of U.S.):

Starting Quarter (Month and Year):

Are you planning to attend The Art Institute of Seattle?

YES

NO

If not attending The Art Institute of Seattle, what college do you plan to attend?

Program of Study:

Personal Information:

Roommates are assigned together based on the same gender identity indicated. Also, due to Washington State liquor laws, the Housing Department makes efforts to assign students over 21 years of age in separate rooms from underage students.

Social Security or Student ID #:

Gender Identity:

Birthday (mm/dd/yyyy):

Admissions Representative (if known):

Please submit a photograph of yourself along with the application (optional).

Housing Application PAGE 2 of 3

Apartment Preference:

Please select your apartment preference below. Simply number your preferences in order, #1 being your first choice. Please refer to the "School-Sponsored Housing Packet", and our web site for more information about rates and options. The Art Institute of Seattle cannot guarantee you will receive your preference.

- Studio, 2 students (starts at \$928 per student per month)
- Large Studio, 3 students (starts at \$928 per student per month)
- 2 Bedroom, 4 students (starts at \$928 per student per month)
- 1 Bedroom, 2 residents (starts at \$979 per student per month)

Please indicate your License Agreement preference. The "School-Sponsored Housing Packet" and the housing web site contains more information about the License Agreement.

- 4 Quarter License Agreement (starts at \$928 per student per month)
- 2 Quarter License Agreement (starts at \$997 per student per month)

Roommate Preference:

I would like to room with:

(First & last name of roommate requested. Your name must appear on this person's application also.)

Describe your ideal roommate below:

Housing Application PAGE 3 of 3

Lifestyle Information:

Please be thorough and honest in answering the following questions as they assist us in selecting the appropriate roommates. Only the student applying for housing should complete this information.

Please note that smoking in Student Housing is not permitted. In addition, the State of Washington has issued a smoking ban that does not allow smoking in public places including twenty-five feet from entrances, exits, windows that open and ventilation intakes.

Do you smoke?

- Yes
- No

Are you allergic to smoke?

- Yes
- No

Describe your cleaning and housekeeping habits:

- Messy
- Cluttered
- Casual
- Clean
- Neat
- White glove

Describe your personality:

- Open Minded
- Outgoing
- Independent
- Conservative
- Introverted
- Private

Please indicate any disabilities or medical conditions in the space below. Please note that requests for accommodations based on disabilities must be submitted to the Disability Coordinator .

By submitting this application I agree to give The Art Institute of Seattle permission to disclose basic personal information located on this questionnaire to potential roommates for the sole purpose of facilitating a good connection with potential roommates. I also declare that all information above is true and complete to the best of my knowledge. I understand that only those students enrolled at The Art Institute of Seattle are allowed to live in School-Sponsored Housing, and that The Art Institute of Seattle makes all reasonable efforts to place persons with suitable roommates, but makes no guarantee to do so.

Please submit this application by mail at: 2323 Elliott Avenue, Seattle WA. 98121, by fax at 206-441-3475, or scan and email to ais_house@aii.edu.